

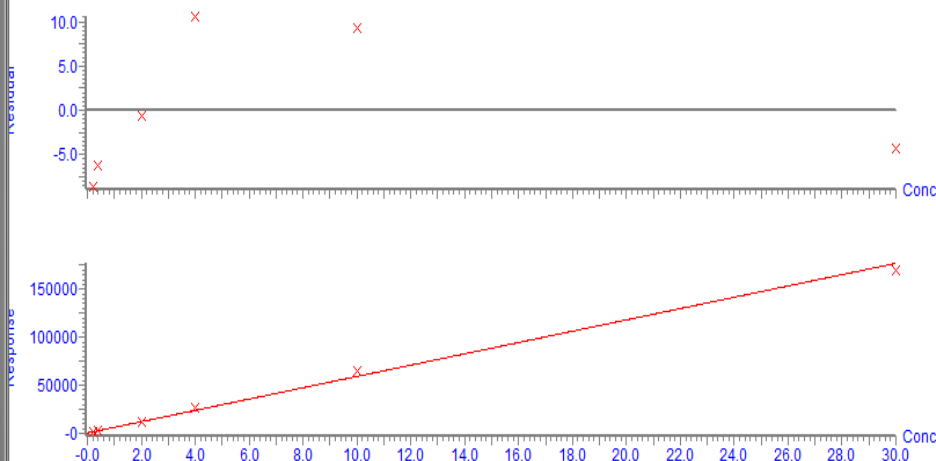


TBBPA (1)

#	Name	Sample Text	Type	Std. Conc	RT	Area	IS Area	Response	Primar...	%Dev	Conc.
1	2014-9-10-016	0.2ppb	Standard	0.200	2.72	1482.670		1482.670	bb	-8.6	0.183
2	2014-9-10-017	0.4ppb	Standard	0.400	2.72	2614.106		2614.106	bb	-6.3	0.375
3	2014-9-10-018	2ppb	Standard	2.000	2.72	12098.384		12098.384	bb	-0.7	1.986
4	2014-9-10-019	4ppb	Standard	4.000	2.72	26437.258		26437.258	bb	10.6	4.423
5	2014-9-10-020	10ppb	Standard	10.000	2.72	64758.832		64758.832	bb	9.3	10.933
6	2014-9-10-021	30ppb	Standard	30.000	2.72	169327.031		169327.031	bb	-4.3	28.700

Calibration: 24 Sep 2014 11:02:45

Compound name: TBBPA (1)
 Correlation coefficient: $r = 0.997747$, $r^2 = 0.995499$
 Calibration curve: $5885.75 * x + 407.089$
 Response type: External Std, Area
 Curve type: Linear, Origin: Exclude, Weighting: 1/x, Axis trans: None



Chromatogram

2014-9-10-016 Smooth(Mn, 1x2)
 0.2ppb

MRM of 2 channels, ES-
 542.7 > 419.7
 2.124e+004

